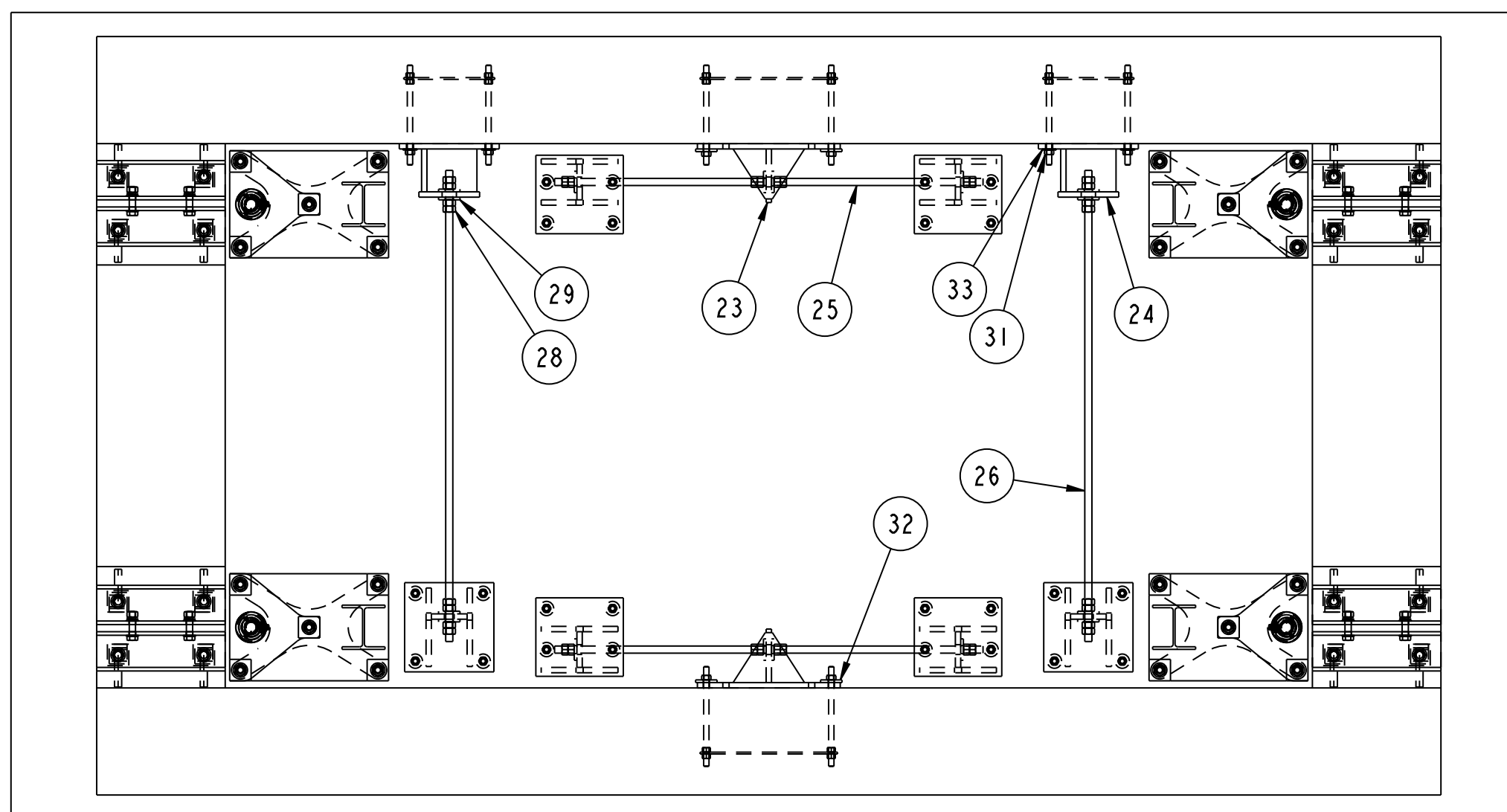


- NOTES:
1. THE FOLLOWING DRAWINGS ARE REQUIRED FOR RAIL SCALE INSTALLATION: GENERAL LAYOUT, FOUNDATION, APPROACH, AND WIRING DIAGRAM. FOR MORE DETAIL ABOUT THE INSTALLATION OF THIS SCALE, REFER TO THE SUPPLIED VRS241 MANUAL.
 2. INSTALL THE PROVIDED RECEIVER PINS INTO THE RECEIVER BASEPLATES AS SHOWN IN THE PIN DETAIL FROM DETAIL A.
 3. INSTALL SAFETY STANDS ON BASE PLATES BEFORE SETTING SCALE. REFER TO SECTION A-A DETAIL.
 4. INSERT THE LOWER RECEIVERS AND LOCATING TOOLS INTO THE RECEIVER BASEPLATES. INSERT THE UPPER RECEIVERS INTO THE BLOCKS LOCATED ON THE MAIN BEAMS, MAKING SURE TO GREASE THE UPPER RECEIVER'S O-RING USING THE PROVIDED LUBRICANT. SET MODULE IN PLACE.
 5. HOLD A MINIMUM 1-1/8" CLEARANCE BETWEEN THE WEIGHBRIDGE AND CURB ANGLES.
 6. INSTALL THE CHECK ROD SYSTEM PER THIS DRAWING. IT IS IMPORTANT THAT THE LONGITUDINAL CHECK RODS ARE CENTERED ABOUT THE LONGITUDINAL CHECK ROD BRACKETS THAT ATTACH TO THE FOUNDATION. ALSO, BE CAREFUL TO LOCATE THE NUTS IN THE EXACT CONFIGURATION SHOWN ON THIS DRAWING. FURTHERMORE, USE THE PROVIDED CLAMP WASHERS WHERE SHOWN ON THE CHECK BRACKETS. IF REGULAR WASHERS ARE USED, THEY COULD BE DAMAGED AND POSSIBLY RESULT IN ADDITIONAL DAMAGE TO THE CHECKING SYSTEM. ALL CHECK RODS ARE TO BE LEVEL AT ZERO WEIGHT READING. AFTER SCALE CALIBRATION, TACK WELD NUTS IN PLACE.
 7. COAT ALL NUTS AND BOLTS WITH NEVER-SEEZ AND TIGHTEN ONE-HALF TURN PAST SNUG TIGHT, WHERE SNUG TIGHT IS DEFINED AS THE TIGHTNESS OBTAINED BY A FEW IMPACTS FROM AN IMPACT WRENCH, OR THE FULL EFFORT OF A MAN USING AN ORDINARY SPUD WRENCH.
 8. INSTALL THE LOAD CELLS AS SHOWN, USING SHIMS AS REQUIRED TO BRING THE MODULES TO THE SAME HEIGHT AND APPROXIMATE SAME INITIAL. DURING LOAD CELL INSTALLATION, GREASE THE INTERIOR BEARING SURFACES OF ALL RECEIVERS WITH TN203217.
 9. AFTER WEIGHBRIDGE IS IN CORRECT WEIGHING POSITION AND LOAD CELLS ARE VERTICAL, GROUT BASE PLATES IN PLACE. USE EPOXY TYPE GROUT, SUCH AS U.S. FIVE STAR EPOXY GROUT. GROUT IS TO DEVELOP 10,000 PSI COMPRESSIVE STRENGTH IN 24 HOURS. BE SURE TO FOLLOW GROUT MANUFACTURER'S INSTRUCTIONS FOR APPLICATION. SIMILARLY, GROUT UNDERNEATH APPROACH RAIL PLATES AFTER THE RAIL PLATES ARE LEVEL AT THE CORRECT ELEVATION.
 10. PROVIDE AT LEAST 75 FEET OF STRAIGHT TRACK AT EACH APPROACH TO WEIGHRAILS.
 11. ADDITIONAL MATERIALS REQUIRED FOR INSTALLATION THAT ARE NOT SUPPLIED BY METTLER TOLEDO:
RAIL: 26 FEET EPOXY GROUT: 3 CUBIC FEET
 12. SCALE MEETS AAR/AREMA COOPER E-80 REQUIREMENTS.



CHECK ROD DETAIL (SOME SCALE ITEMS REMOVED FOR CLARITY)

SCALE 0.050

38	1	TB202627	CONNECTOR CLEANER
37	1	TN207502	TOUCH-UP PAINT KIT
36	1	TN203217	LUBRICANT, LOADCELL-RECEIVER
35	16	TN300995	RAIL CLIP
34	16	TN203228-3	ANTI-CREEP SPACER, 131-140LB RAIL
33	8	MZ0901030072	FLAT WASHER: 3/4" DIA, ZN
32	12	TN201244	CLAMP BAR, FOR 3/4" ANCHOR
31	20	MZ0901020017	HEX NUT: 3/4-10 UNC-2B, ZN
30	12	TN207198	PIN, PDX LOWER RECEIVER
29	16	TN205068	7260, CLAMP BAR, 1" ANCHORS
28	32	MZ0901020047	NUT, 1-8, HEX, GR-5, ZN
27	28	TN306833	7260 PANDROL "E" CLIP
26	2	T31049606600	CHK ROD, 1-8, SAE GR 2, ZN, 66" LONG
25	2	T31049606000	CHK ROD, 1-8, SAE GR 2, ZN, 60" LONG
24	2	TB205186	7260, LAT CHK BKT, CIM, WALL MNT
23	2	TB310506	7260, LONG CHK BKT, CIM, WALL MNT
22	8	TA203228-2	APPROACH ANTI-CREEP ANGLE, 131-140#
21	12	MZ0901030087	LOCK WASHER: 7/8" DIA
20	24	MZ0901030061	FLAT WASHER: 7/8" DIA.
19	12	MZ0901020052	HEX NUT: 7/8-9, A490, ZN
18	12	MZ0901010245	HEX BOLT: 7/8-9 UNC-2A X 3 1/2 A490
17	8	MZ0901030059	FLAT WASHER: 1" DIA, ZN
16	8	MZ0901010497	HEX BOLT: 1-8 UNC-2A X 1 1/2, ZN, GR8
15	4	TN311077	7260B, ANGLE, ANTI-CREEP, 131-140# AREA RAIL
14	4	TA207315-3	RECEIVER SHIM, 1/16" THICK (16 GA)
13	8	TA207315-2	RECEIVER SHIM, 1/8" THICK (11 GA)
12	4	TA208819	PDX AREMA UPPER RECEIVER & O-RING ASSY
11	4	TA208817	PDX LOWER RECEIVER, AREMA
ITEM	QTY	PART NUMBER	DESCRIPTION
HARDWARE KIT OF PARTS: TC209043-1			

4	1	TC209043-1	HARDWARE KIT OF PARTS
3	1	WP-04-001	WIRING KIT OF PARTS
2	4	42904891	LOAD CELL, PDX, 50mI CAPACITY
1	1	TC209045-00T	VRS241, SGL, CIM, FACTORY ASSEMBLY
ITEM	QTY	PART NUMBER	DESCRIPTION
MAJOR BILL OF MATERIAL			

REV	CHANGE	BY	DATE	SCALE 0.040	DATE 9/9/11	DRN JLB/APPD JLB	TITLE	UNLESS OTHERWISE SPECIFIED, ALL DIMENSIONS ARE IN INCHES, AND TOLERANCES ARE:	THIS PRINT IS FURNISHED WITH THE UNDERSTANDING THAT THE ESSENCE THEREOF WILL NOT BE REPRODUCED IN WHOLE OR IN PART WITHOUT WRITTEN AUTHORIZATION OF METTLER-TOLEDO, INC. ALL DESIGNS ARE THE PROPERTY OF METTLER-TOLEDO, INC. AND WILL BE PROTECTED BY PATENTS.	REV
							VRS241, GLO, SGL, CIM, 131-140# AREMA	FRACTIONAL .XX ± .02 .XXX ± .005		TC209043